



AllWays Traveller

Canterbury, UK

[www.allwaystraveller.com](http://www.allwaystraveller.com)

## An historic heart to the garden of England

Canterbury is an historic city in the county of Kent, which itself is known as the 'Garden of England'.

Becoming a centre of population during prehistoric times the area thrived as both a Roman city and Anglo Saxon settlement and has maintained its status as a trading hub ever since.

But it is undoubtedly the 9<sup>th</sup> Century Canterbury Cathedral that dominates this historic and very attractive city and which draws hundreds of thousands of tourists to the city each year.

Within strolling distance of the cathedral are clustered any number of charismatic coffee shops and cafes, traditional pubs and ale houses and dining options.

For those looking to explore further a field, Canterbury is a fine location for a short trip to the small coastal town of Whistable and for touring the villages in rural Kent – *the Garden of England*.

### Ashley Gibbins

Managing Editor  
AllWays traveller

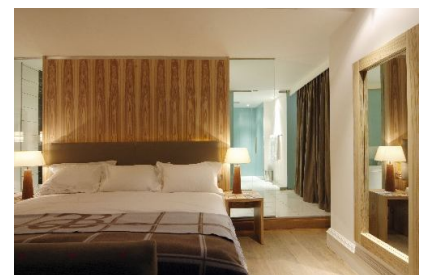


[www.canterbury.co.uk](http://www.canterbury.co.uk)  
[www.abodehotels.co.uk](http://www.abodehotels.co.uk)

### The Abode Canterbury

The Abode Canterbury located in the very heart of the city some 300 metres from Canterbury Cathedral.

The hotel is an excellent example of how to combine 21<sup>st</sup> Century facilities and the highest standards of service within an historic setting.



## The Abode Canterbury

### What to do in Canterbury

#### The Cathedral

This magnificent Cathedral is one of the UK's oldest and most important Christian structures and seat of the Archbishop of Canterbury.

The murder of Thomas Becket, in the Cathedral in 1170, saw the city becoming the destination for pilgrims from throughout Europe and formed inspiration for Geoffrey Chaucer's 14<sup>th</sup> Century *Canterbury Tales*.

The tales also provide the focus for the entertaining *The Canterbury Tales* visitor attraction.

[www.canterbury-cathedral.org](http://www.canterbury-cathedral.org)

[www.canterburytales.org](http://www.canterburytales.org)

#### Walking tours

The 1 ½ hour Canterbury Guild of Guides Blue badge walking tour starts from the Tourist Information Office by the Cathedral.

[www.blue-badge-guides.com/SouthEast](http://www.blue-badge-guides.com/SouthEast)

Those who want to explore alone can opt for the Canterbury audio tour which provides headset and map for a point-to-point tour that can take as long as you want.

#### River tours

The historic river tours (April to October) are one of the best ways to view unseen parts of the city and enjoy tales of Canterbury past.

[www.canterburyrivertours.co.uk](http://www.canterburyrivertours.co.uk)

#### Ghost tours

The after dark ghost tours last 75 minutes and are a light hearted and entertaining way to discover Canterbury's 'hideous' past

[www.canterburyghosttour.com](http://www.canterburyghosttour.com)

#### Canterbury Attractions Passport

The Canterbury Attractions Passport offers discounts and incentives on the city's attractions including :

- free entry into Canterbury Cathedral, St Augustine's Abbey, the Canterbury Tales and the Museum of Canterbury, which takes in the Rupert the Bear museum, the Roman Museum and the Westgate Towers, and
- discounts on the Ghost Tours, Canterbury Tourist Guides, the Visitor Centre, the Historic River Tours, and Howlett's Wild Animal Park.

(Adults £20.00, children £15.50, concessions £17.00).

More information on Canterbury : [www.canterbury.co.uk](http://www.canterbury.co.uk)

### The Abode Canterbury



Situated in the heart of the city, the 72 room Abode Canterbury steps onto the car free High Street with its cluster of quaint shops and cafes.

#### Michael Caines Restaurant

The 2 AA-Rosette Michael Caines Restaurant is fine dining in every sense serving a menu that showcases fresh, local produce and there is a lively cocktail and champagne bar popular with visitors and locals alike.

The elegant rooms have a luxury private bathroom with a monsoon shower,

The Old Brewery Tavern, Abode's adjoining pub serves local food and ales and live music in the evenings.

Produced in association with :

**Abode**  
HOTELS

30-33 High St, Canterbury, Kent CT1 2RX.

01227 766 266

[reservationscanterbury@abodehotels.co.uk](mailto:reservationscanterbury@abodehotels.co.uk)

[www.abodehotels.co.uk](http://www.abodehotels.co.uk)



[www.allwaystraveller.com](http://www.allwaystraveller.com)

*AllWays traveller* provides independent travelers with an equally independent view of the world from the International Travel Writers Alliance - the world's largest association of professional travel writers, editors, broadcasters and photographers worldwide. [www.itwalliance.com](http://www.itwalliance.com)